

# OPERATION INSTRUCTIONS Crestron 4-i MMXX

This console is equipped with a PC computer and Doc Cam connected to digital video projector. HDMI and VGA laptop connections are available

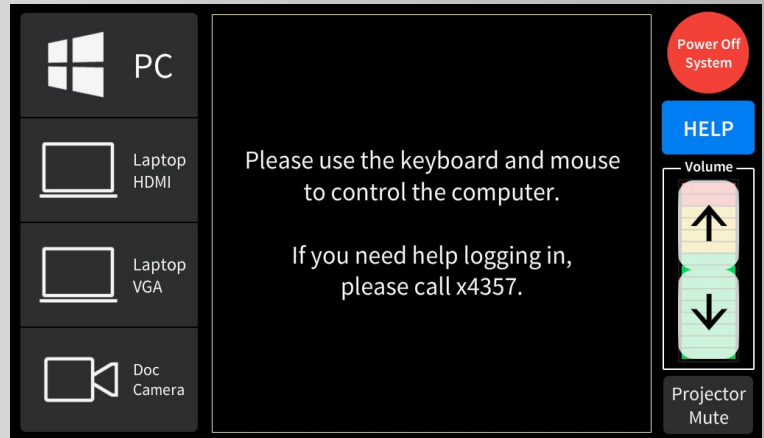
The Crestron **Touch Panel** is utilized for control.  
If the panel has gone to sleep, touch it to resume.  
Press **Power On System** to get started.



Once the projector has warmed up the **PC** Computer will be automatically selected.

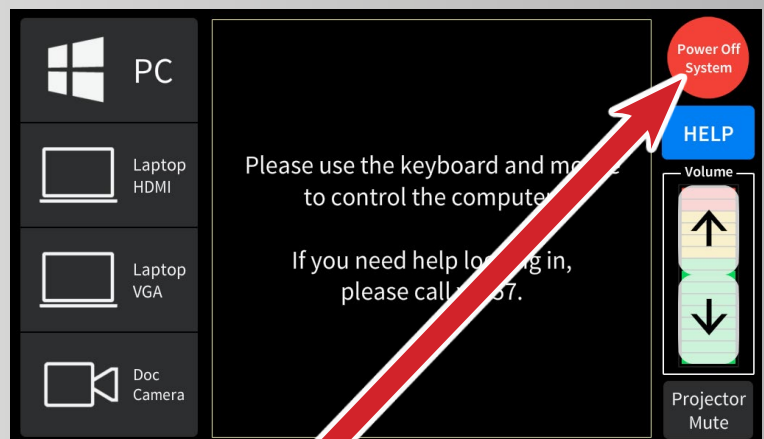
**Laptop** inputs and the **Doc Cam** may also be selected in the left column.

**Laptop display cables** are available in the cubby beside the touch panel.



**Audio Volume** can be adjusted with the control buttons on the right.

**Projector Mute** can be used to temporarily hide your presentation.



**When finished with your presentation  
Please Press Power Off System**

**Need help? Call Classroom Support at 878-6670**