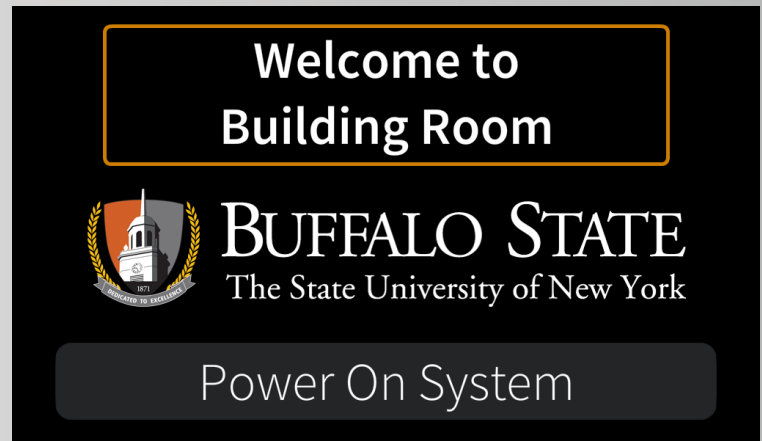


OPERATION INSTRUCTIONS Crestron 4-i MMXX

This console is equipped with a PC computer and Document Camera connected to digital video projector. HDMI and VGA laptop connections are available.

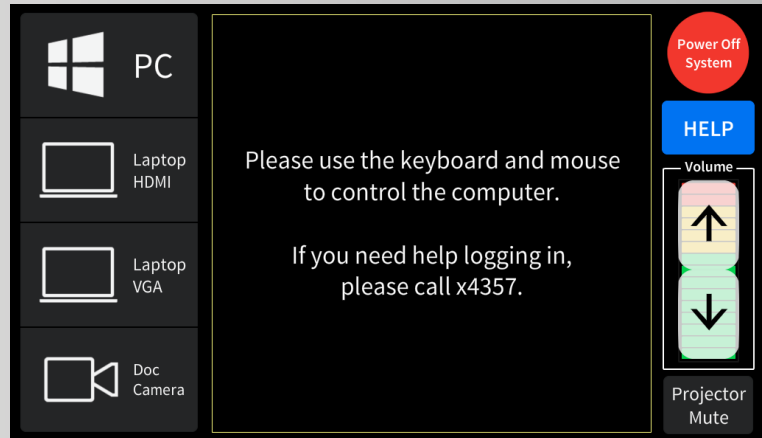
The Crestron **Touch Panel** is utilized for control.
If the panel has gone to sleep, touch it to resume.
Press **Power On System** to get started.



Once the projector has warmed up the **PC** Computer will be automatically selected.

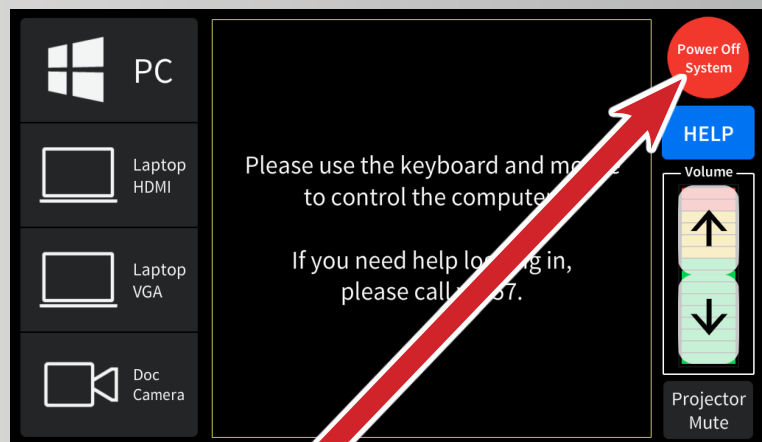
Laptop inputs and the **Doc Cam** may also be selected in the left column.

Laptop display cables are available in the cubby beside the touch panel or in the console drawer.



Audio Volume can be adjusted with the control buttons on the right.

Projector Mute can be used to temporarily hide your presentation.
Please note- This **Will Not** turn off the projector.



**When finished with your presentation
Please Press Power Off System**

Need help? Call Classroom Support at 878-6670